

**HYD-12/3150-40C (9054) 型 断路器用环氧固封极柱**  
**EMBEDDED POLE WITH EPOXY FOR CIRCUIT-BREAKER**

Q/20258792-X·521—2005《3.6~40.5kV 交流高压断路器用环氧固封极柱》适用，并作如下补充：  
**主要技术参数 (MAIN TECHNICAL DATA)**

| 参数名称 (Data)   | 单位 (Unit)                                      | 数值 (Value)             |
|---|--|------------------------|
| 额定电压<br>Rated Voltage   | kV   | 12                     |
| 雷电冲击耐受电压 (峰值)<br>Lightning Impulse Withstand Voltage (Peak)             | kV   | 85                     |
| 短时 (1min) 工频耐受电压<br>Short-time (1min) Power-frequency Withstand Voltage | kV   | 48                     |
| 额定频率<br>Rate Frequency  | Hz   | 50                     |
| 额定电流<br>Rated Current   | A  | 3150                   |
| 额定短时耐受电流<br>Rated Short-time Withstand Current                          | kA   | 40                     |
| 额定短路持续时间<br>Rated Duration of Short-circuit                             | s  | 4                      |
| 额定峰值耐受电流<br>Rated Peak Withstand Current                                | kA   | 100                    |
| 额定短路关合电流<br>Rated Short-circuit Making Current                          | kA   | 100                    |
| 额定短路开断电流<br>Rated Short-circuit Breaking Current                        | kA   | 40                     |
| 最大直流分量<br>Max. Dc component   |  | 50%                    |
| 额定短路开断电流开断次数<br>Switching Operations of Rated Short-circuit Breaking    | 次<br>Operations                                | 30                     |
| 额定单个电容器组开断电流<br>Rated Single Capacitor Bank Breaking Current            | A  | 400※                   |
| 额定背对背电容器组开断电流<br>Rated Back-to-back Capacitor Bank Breaking Current     | A  | 400※                   |
| 机械寿命<br>Mechanical Endurance  | 次<br>Operations                                | 10000                  |
| 触头开距<br>Clearance Between Open Contacts                                 | mm   | 10±2                   |
| 触头自闭力<br>Contact Closed Force Due to Bellows and Atmosphere             | N  | 210±50                 |
| 触头反力<br>Counterforce of Contact at Full Stroke                          | N  | 300±50                 |
| 额定超行程下限时的回路电阻<br>Circuit Resistance at Min. Rated Over-travel           | μΩ   | ≤12                    |
| 触头允许磨损厚度<br>Contact Limit Erosion                                       | mm   | 3                      |
| 运动部分的质量<br>Mass of Moving Parts   | kg   | 6.1±0.3                |
| 内部气体压力<br>Internal Gas Pressure   | Pa   | <1.33×10 <sup>-3</sup> |
| 允许储存期<br>Shelf Life   | 年<br>Year                                      | 20                     |
| 局部放电量 (13.2kV)<br>Magnitude Of Partial Discharge (13.2kV)               | pC   | ≤1                     |
| 波纹管防扭力矩<br>Torsionproof Moment Of Bellows                               | N·m  | ≤40                    |
| 额定操作顺序<br>Rated Operating Sequence                                      | 分-180秒-合分-180秒-合分<br>0 - 180s - CO - 180s - CO |                        |

**配套的真空开关设备应满足的机械参数**

**MECHANICAL DATA OF VACUUM SWITCH EQUIPPED WITH THE INTERRUPTERS**

| 参数名称 (Data)  | 单位 (Unit) | 数值 (Value) |
|--|-----------|------------|
| 平均分闸速度 (前 6mm)<br>Average Opening Speed (first 6mm)              | m/s       | 1.1±0.2    |
| 平均合闸速度 (后 6mm)<br>Average Closing Speed (last 6mm)               | m/s       | 0.6±0.2    |
| 触头合闸弹跳时间<br>Contact Bounce Duration at Closing Operation         | ms        | ≤3         |
| 触头合闸和分闸不同期<br>Out of Simultaneity of Contact Closing and Opening | ms        | ≤1         |
| 额定超行程<br>Rated Over-travel                                       | mm        | 3.5±0.5    |
| 额定超行程下限时的触头压力<br>Contact Pressure at Min. Rated Over-travel      | N         | 4500±300   |
| 触头最大分闸反弹量<br>Max. rebound of contact at opening Operation        | mm        | 2          |
| 触头分闸允许过冲<br>Overtravel during Opening                            | mm        | ≤2         |

注 1: “※” 为需要时提供的额定参数;

Note 1: “※” Rated characteristics to be given on request;

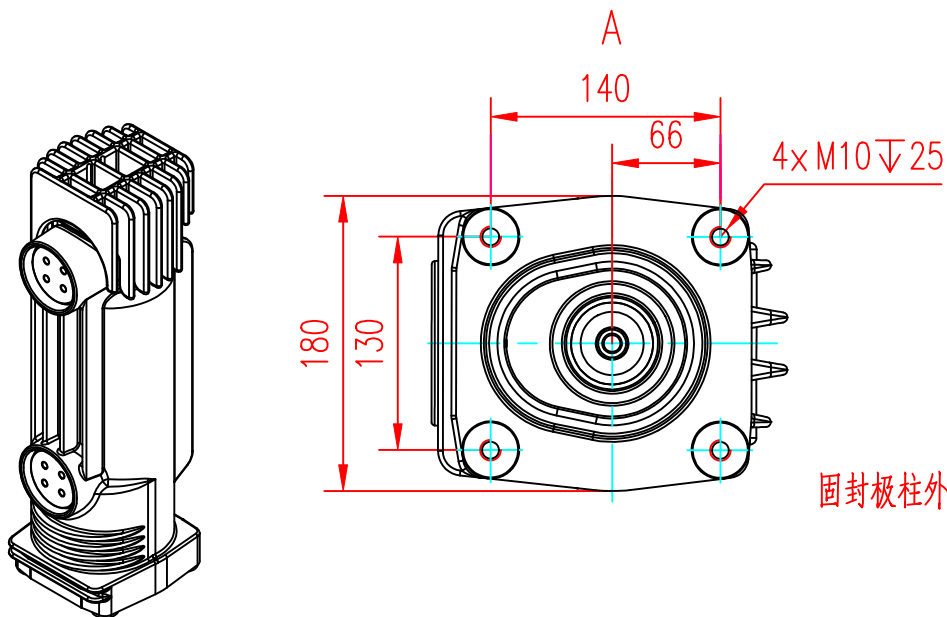
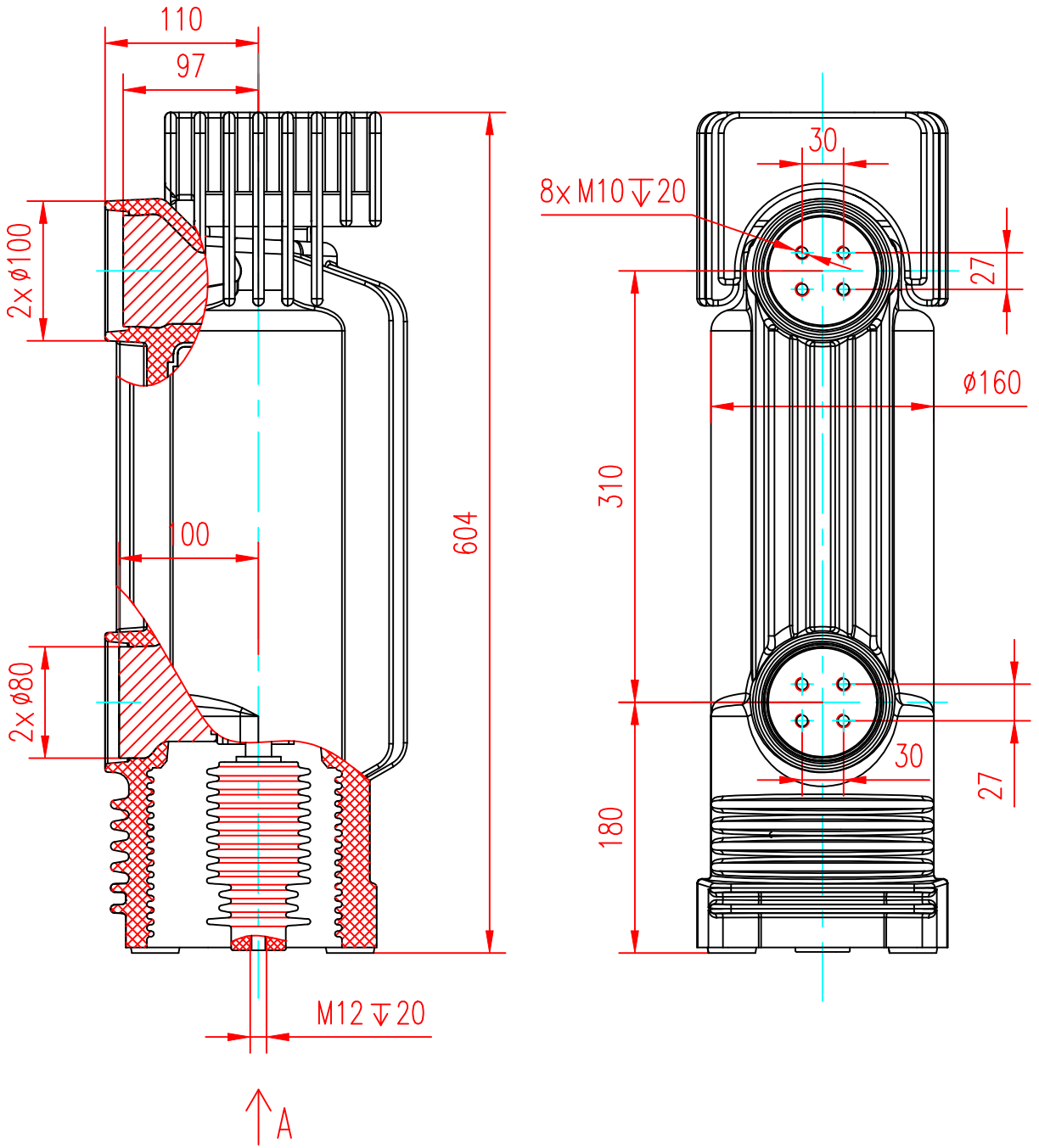
注 2: 产品符合或超过 ICE62271-100 以及 GB1984-2003 中 E2 级的要求。

Note 2: Meets or exceeds the electrical endurance requirements of class E2 for IEC 62271-100 and GB1984-2003.

会 签

固封极柱的外形尺寸、安装尺寸应符合按规定程序审批的图样要求，见图1。

HYD-12/3150-40C(9054)



固封极柱外观颜色：红棕色。

图1

|       |    |
|-------|----|
| 责任    | 签字 |
| 制图    |    |
| 描图    |    |
| 描校    |    |
| 旧底图总号 |    |
| 底图总号  |    |
| 日期    | 签字 |