

TC-15/630-20A(2348-G)型 断路器用真空灭弧室

CERAMIC VACUUM INTERRUPTER FOR CIRCUIT-BREAKER

Q/20258792-X·667—2004 《3.6~40.5kV 交流高压断路器用真空灭弧室》适用，并作如下补充：

主要技术参数 (MAIN TECHNICAL DATA)

参数名称 (Data)	单位 (Unit)	数值 (Value)
额定电压 Rated Voltage	kV	15
雷电冲击耐受电压 (峰值) Lightning Impulse Withstand Voltage (Peak)	kV	100
短时 (1min) 工频耐受电压 Short-time (1min) Power-frequency Withstand Voltage	kV	50
额定频率 Rate Frequency	Hz	50
额定电流 Rated Current	A	630
额定最小启动电流 (误差 ≤ ±10%) Min. Rated Starting Current (error ≤ ±10%)	A	液压控制: 串联线圈额定电流的 2 倍 电子控制: 可调 Hydraulic Pressure Control: it is twice as large as the rated current of series coil. Electron Control: it is adjustable.
额定短时耐受电流 Rated Short-time Withstand Current	kA	20
额定短路持续时间 Rated Duration of Short-circuit	s	4
额定峰值耐受电流 Rated Peak Withstand Current	kA	50
额定短路关合电流 Rated Short-circuit Making Current	kA	50
额定短路开断电流 Rated Short-circuit Breaking Current	kA	20
额定操作电压 Rated Operating Voltage	kV	15
机械寿命 Mechanical Endurance	次 Operations	10000
触头开距 Clearance Between Open Contacts	mm	9 ± 1
触头自闭力 Contact Closed Force Due to Bellows and Atmosphere	N	80 ± 25
触头反力 Counterforce of Contact at Full Stroke	N	140 ± 30
额定触头压力下限时的回路电阻 Circuit Resistance at Min. Rated Contact Force	μ Ω	≤ 25
触头允许磨损厚度 Contact Limit Erosion	mm	3
运动部分的质量 Mass of Moving Parts	kg	0.6
内部气体压力 Internal Gas Pressure	Pa	$< 1.33 \times 10^{-3}$
允许储存期 Shelf Life	年 Year	20
额定操作顺序 Rated Operating Sequence	分-t1-合分-t2-合分-t3-合分-闭锁 0-t1-C0-t2-C0-t3-C0-Lockout	

配套的真空开关设备应满足的机械参数

MECHANICAL DATA OF VACUUM SWITCH EQUIPPED WITH THE INTERRUPTERS

参数名称 (Data)	单位 (Unit)	数值 (Value)
平均分闸速度 Average Opening Speed	m/s	1.1 ± 0.2
平均合闸速度 Average Closing Speed	m/s	0.6 ± 0.2
触头合闸弹跳时间 Contact Bounce Duration at Closing Operation	ms	≤ 3
触头合闸和分闸不同期 Out of Simultaneity of Contact Closing and Opening	ms	≤ 1
额定触头压力 Rated Contact Pressure	N	1800_0^{+200}
触头最大分闸反弹量 Max. rebound of contact at opening Operation	mm	2
触头分闸允许过冲 Overtravel during Opening	mm	≤ 2

注: 产品符合或超过 IEC62271-100 以及 GB1984-2003 中 E2 级的要求。

Note: Meet or exceeds the electrical endurance requirements of class E2 for autoreclosing duty per IEC6271-100 and GB1984-2003.

会 签

Q/20258792-X·2348--2007

灭弧室的外形尺寸，安装尺寸应符合按规定程序审批的图样要求，见图2。

TC-15/630-20A(2348-G)

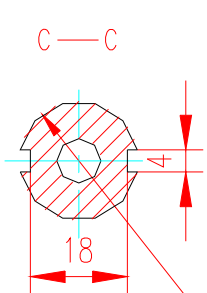
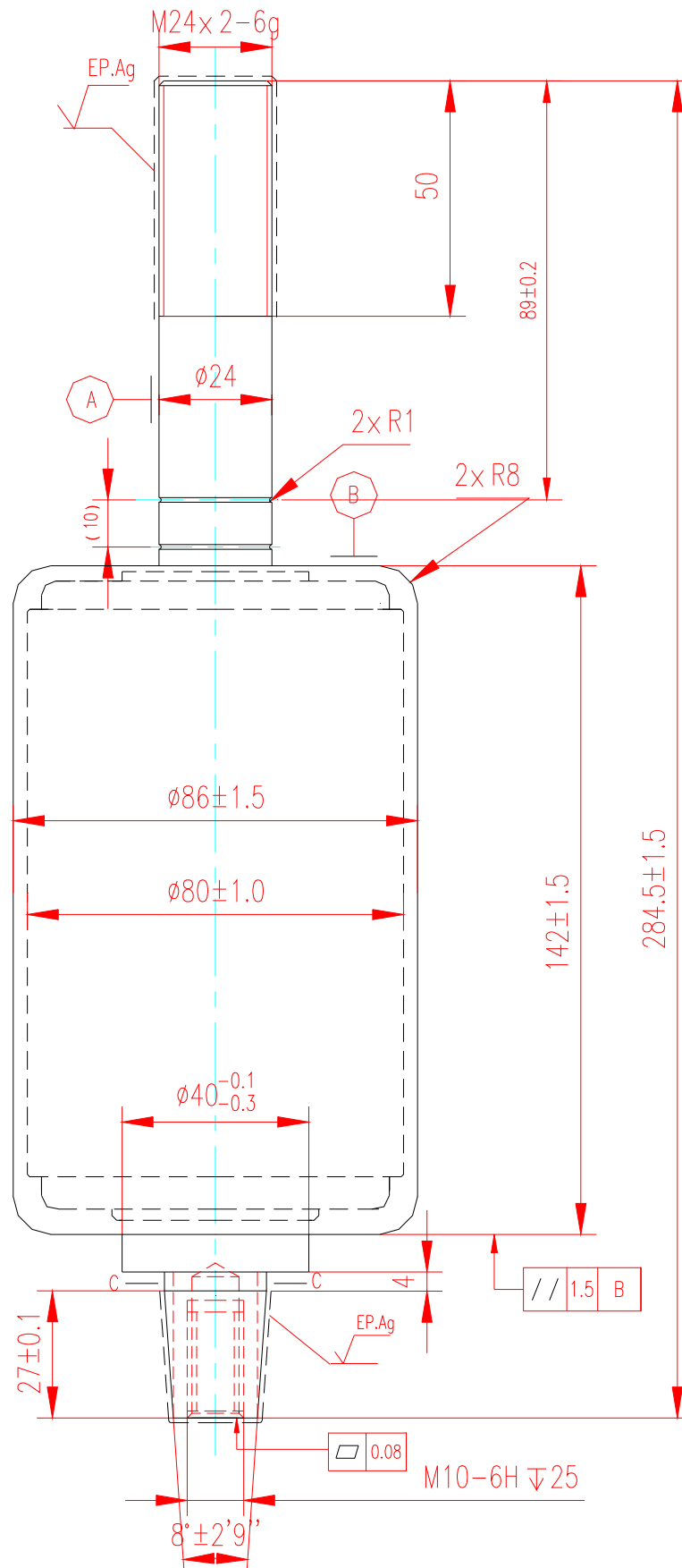


图1

责任	签字
制图	
描图	
描校	
旧底图总号	
底图总号	
日期	签字