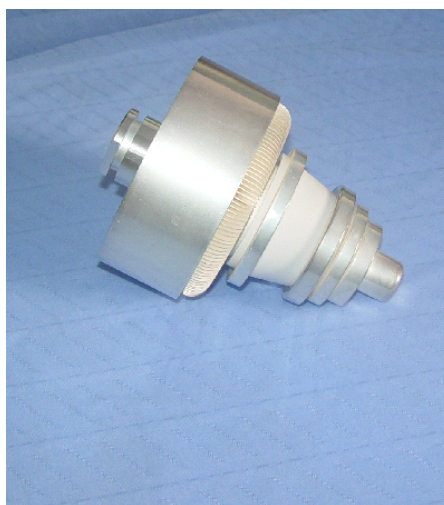


DB954 产品样本

DB954 大功率金属陶瓷四极管是采用网状钽钨阴极、鼠笼型栅极、同轴型电极结构。适宜在电视发射机中作宽带线性放大器使用。可与 YL1420 互换使用。



1 一般特性

1.1 阴极特性

加热方式	直热式
加热电压(U_f)	6.3V
加热电流(I_f)	118A

1.2 静态特性

阴极发射电流($U_a=U_g=350V$)	25A
放大系数(μ)	7
跨导	35mA/V

	阴极接地	栅极接地
输入电容	90	49 pF
输出电容	16	17 pF
控制栅极与阳极电容	0.55	-- pF
阴极与阳极电容	--	0.15 pF

2 最大额定值

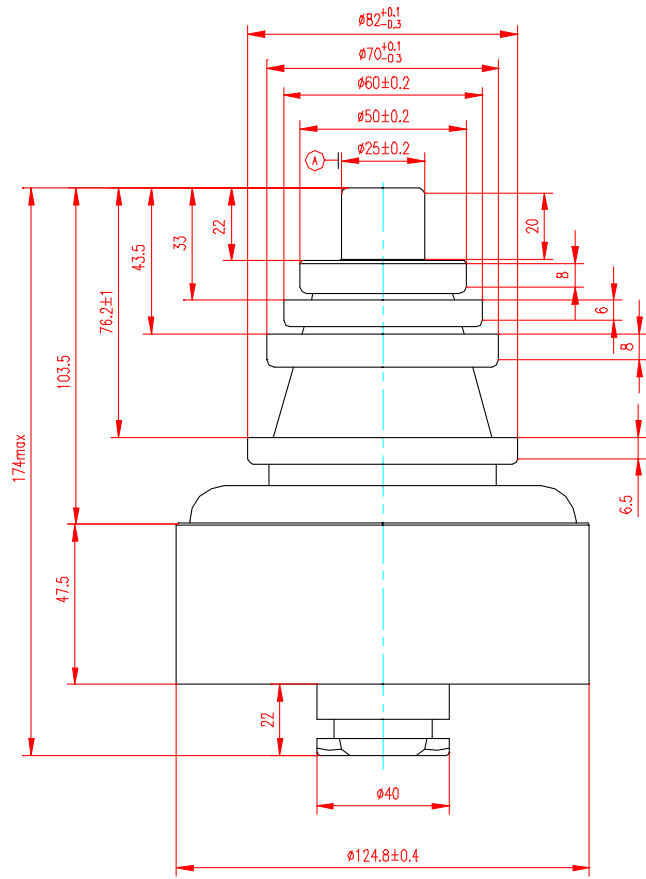
频率	f	260	MHz
阳极直流电压	U_a	6.5	kV
阳极直流电流	I_a	2.25	A
阳极耗散功率	P_a	6	kW

控制栅极直流电压	U_{g1}	-500	V
帘栅极直流电压	U_{g2}	1	kV
阴极电流	I_k	4.5	A
控制栅极耗散功率	P_g	40	W
帘栅极耗散功率	P_g	80	W

3 典型工作状态

频率	f	175.25	MHz
带宽 (-1dB)	B	7	MHz
阳极直流电压	U_a	5	kV
帘栅极直流电压	U_{g2}	600	V
控制栅极直流电压	U_{g1}	-80	V
阳极电流(零信号)	I_a	650	mA
阳极电流 (黑电平)	I_a	2.1	A
帘栅极电流	I_{g2}	20	mA
控制栅极电流	I_{g1}	75	mA
阳极输入功率 (同步顶)	P	350	W
阳极输入功率 (黑电平)	P	200	W
输出功率 (同步顶)	P	8.6	kW
输出功率 (黑电平)	P	5.15	kW
增益 (同步顶)	G	13.8	dB
增益 (黑电平)	G	14.1	dB

4 产品外型图



DB954 TETRODE

1 General Characteristics

1.1 Cathode Characteristics

Heating	Direct
Filament voltage (U_f)	6.3V
Filament current (I_f)	118A

1.2 Feature Characteristics

Cathode Emission Current ($U_a=U_g=350V$)	25A
Amplification Factor (μ)	7
Transconductance	35mA/V

	grounded cathode	grounded grid
Input	90	49 pF
Output	16	17 pF
Anode to grid 1	0.55	-- pF
Anode to filament	--	0.15 pF

2 Maximum Ratings

Frequency	f	260	MHz
Anode DC Voltage	U_a	6.5	kV
Anode DC Current	I_a	2.25	A
Anode Dissipation	P_a	6	kW
Grid 1 Voltage	U_{g1}	-500	V
Grid 2 Voltage	U_{g2}	1	kV
Cathode Current	I_k	4.5	A
Grid 1 Dissipation	P_{g1}	40	W
Grid 2 Dissipation	P_{g2}	80	W

3 Typical Application

Frequency	f	175.25	MHz
Bandwidth(-1dB)	B	7	MHz
Anode Voltage	U_a	5	kV
Grid 2 Voltage	U_{g2}	600	V
Grid 1 Voltage	U_{g1}	-80	V
Anode Current (no signal condition)	I_a	650	mA
Anode Current,black	I_a	2.1	A
Grid 2 Current	I_{g2}	20	mA
Grid 1 Current	I_{g1}	75	mA
Driving power,sync	P	350	W
Driving power,black	P	200	W
Output Power In Load,sync	P	8.6	kW
Output Power In Load,black	P	5.15	kW
Gain,sync	G	13.8	dB
Gain,black	G	14.1	dB

4 Product Outline Drawing

